



Israel
**Cancer
Research
Fund**

Impact Statement 2023



ICRF'S mission is to support
the best and brightest scientists
conducting groundbreaking cancer
research in Israel.

Your gift will help bring us closer
to our goal of ending the suffering
caused by cancer. The answer
to cancer is research!



Dear Friends and Supporters

We are delighted to welcome you to the Israel Cancer Research Fund's Annual Impact Statement for 2023. As we reflect on the progress made in the fight against cancer, we are filled with gratitude for your unwavering commitment and support. We are nonetheless reminded of the many unprecedented challenges that lie ahead.

As we write this message, Israel is entering its eighth week of war. This is in response to the horrific atrocities waged upon her by those who would destroy her. Support for our brilliant Israeli researchers and the generosity of our donors is, therefore, even more significant.

Cancer continues to be one of the most pressing health challenges of our time, affecting individuals and families around the world. Sadly, even war will not offer a respite from this fact. Our Israeli researchers are more committed than ever to win the war on cancer, even in these most challenging times.

Just know one thing.... ICRF will stand steadfastly with Israel as we always have. Reminiscent of our founding after the Yom Kippur War, ICRF helped rebuild Israel then and we will help rebuild it now. It will come as no surprise that the monetary costs of this war will deeply negatively impact Israeli institutions, hospitals, universities and the government's ability to fund and support her brightest minds and researchers when the war is over. And that is why ICRF's commitment must be stronger than ever. It is why your support is needed now more than ever.

In this year's Impact Statement, we will take you on a comprehensive journey through the remarkable achievements and breakthroughs that have been made possible by your contributions. We are particularly proud to highlight the pioneering research projects led by Israeli scientists that are changing the landscape of cancer research on a global scale.

Your support is not just changing lives today; it is building a foundation for a cancer-free tomorrow, driven by the brilliance and determination of Israeli researchers. As we look ahead, we see a world where cancer is no longer a source of fear and despair, but a challenge that we have met and conquered together, thanks in large part to the exceptional talent within our Israeli research community.

In closing, we want to express our heartfelt gratitude to each and every one of you. It is your compassion, dedication, and belief in the power of Israeli research that make all of this possible. We invite you to explore this year's Impact Statement in more detail and discover the remarkable impact your support has made.

With gratitude and hope,



David Abramson

President, ICRF International



Bryna Goldberg

Chair, ICRF International



Beryl P. Chernov

ICRF National Executive Director

Your support is not just changing lives today; it is building a foundation for a cancer-free tomorrow, driven by the brilliance and determination of Israeli researchers.

Making an Impact

Milestones

ICRF is proud of the many grantees that have been and continue to be involved in major cancer research breakthroughs. Selected achievements made possible by ICRF funding include:

Velcade®

A drug used to treat multiple myeloma, a cancer of the bone marrow, was developed based on the research of ICRF Research Professorship Grant Recipients and Nobel Laureates Drs. Avram Hershko and Aaron Ciechanover of The Technion – Israel Institute of Technology.

Prior to this, there were no effective treatment options. Today, this drug, along with more efficacious second- and third-generation drugs based on the same research, are the standard of care used worldwide, while the median survival for patients of this once fatal disease has nearly quadrupled.

Gleevec®

The first drug to directly target cancer cells was developed based on the research of ICRF grantee Dr. Eli Canaani of the Weizmann Institute of Science.

Gleevec® was the first drug on the market to directly target the cancer-causing cells in chronic myeloid leukemia (CML) while leaving healthy cells alone. Gleevec® changed the course of this once-fatal disease, turning it into a manageable condition. *Time* magazine put the drug on its cover and dubbed it a “bullet” against this devastating form of cancer.

Doxil®

The first drug encapsulated in a liposome (or microscopic fat bubble) for direct delivery to a tumor site was developed by ICRF grantee Dr. Alberto Gabizon of Shaare Zedek Medical Center.

Doxil® has a prolonged duration of circulation compared to other liposomes and dramatically decreased toxicities compared to native drugs. Doxil was the first liposomal cytotoxic agent approved to treat a solid tumor and currently has a role in the treatment of ovarian cancer, AIDS-related Kaposi sarcoma and several other forms of cancer.

Over

2,800

Grants funded to date.



The p53 Gene

Originally thought to cause cancer, after additional research it was discovered that the p53 gene, in an unmutated form, was actually a tumor suppressor. Its role in the majority of human cancers was further clarified by ICRF grantees Drs. Moshe Oren and Varda Rotter of the Weizmann Institute of Science.

This gene is often referred to as the “guardian of the genome” due to its role in regulating DNA repair and cell division. It suppresses tumors by either repairing damaged DNA or triggering the death of cells where the DNA is too damaged to be repaired.

DNA Methylation

This is a molecular process that turns genes on and off and acts as a guide for reproducing cells by telling the cells which parts of the DNA should be used and which should not. Pioneering work in this area was conducted by ICRF Research Professorship grantee and Israel Prize winner, Dr. Howard Cedar of the Hebrew University-Hadassah Medical School.

The RAD51 Gene

The discovery that a minor mutation in this gene increases the risk of breast cancer in women with the BRCA2 gene mutation was made by ICRF grantee Dr. Ephrat Levy-Lahad of Shaare Zedek Medical Center.

Novel Bone Marrow Transplant Technique

This technique, developed by ICRF grantee Dr. Yair Reisner of the Weizmann Institute of Science, greatly expanded the donor pool for leukemia treatment.

Making an Impact

ICRF Collaborative Partners

CONQUER CANCER® THE ASCO FOUNDATION

The ICRF – Conquer Cancer (The ASCO Foundation) Career Development Award – A three-year grant to support an Israeli early-career clinical investigator to establish an independent clinical cancer research program. (Currently, two grants are being supported).



The ICRF – Cancer Research Institute (CRI) Clinic and Laboratory Integration Program (CLIP) Grant – A two-year grant to support established Israeli investigators who are studying critical topics at the intersection of laboratory and clinical research in immuno-oncology.

The ICRF – CRI Immunotherapy Project Grant – A three-year grant to support an established Israeli investigator studying immunotherapy.



The ICRF – Mark Foundation for Cancer Research Project Grant – A three-year grant awarded to established investigators investigating the role of bacteria in glioblastoma multiforme (GBM).

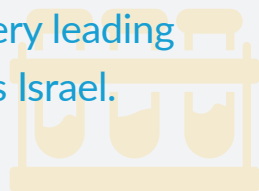


The ICRF-Rolfe Pancreatic Cancer Foundation Acceleration Grant – A two-year grant awarded to investigators proposing highly innovative approaches that promise to pioneer new ways of thinking about early detection of pancreatic cancer.

Over

\$92million

in funding awarded for ground-breaking cancer research conducted at every leading institution across Israel.



ICRF Named Grants

We are grateful for the generosity of our supporters who make this research possible.

Research Professorship Grants

- The Mark z"l & Zita z"l Bernstein Research Professorship Grant
- ICRF - Nikoh Foundation Research Professorship Grant
- The Harvey and Gloria Kaylie Foundation Research Professorship Grant
- ICRF - Glazer Foundation Research Professorship Grant (2 Grants)

Project Grants

- The Anita & Jay Kaufman Memorial Project Grant
- The Dr. Jerry Gross Memorial Project Grants (4 Grants)
- The ICRF – Joseph Safra Memorial Grant for Glioblastoma Research
- The ICRF - Redhill Foundation Project Grants (3 Grants)
- The “Larger than Life” Pediatric Project Grant
- The Omer Ashkenazi Memorial Project Grant

Research Career Development Awards (RCDA)

- The David and Janet Polak Foundation Research Career Development Award
- The Dr. Jerry Gross Memorial Research Career Development Awards (2 Grants)
- The ICRF - Redhill Foundation Research Career Development Awards (2 Grants)
- The Lea Weinstock Research Career Development Award
- The Machla Liebe Librach Stomach Cancer Research Fund Research Career Development Award
- The Marjorie B. Cohen Memorial Research Career Development Award

Postdoctoral Fellowships

- The Alexander Family Grant for Women's Cancers
- The Cheri Meyer Memorial Award and Dr. Leo Gordon and Team Honorary Award

Making an Impact

ICRF Grant Programs

Research Professorship Grants

\$550,000 over a 5-year period – Awarded to full-time, senior scientists with established laboratories, who have made and will continue to make outstanding contributions to cancer research.

Project Grants

\$198,000 over a 3-year period – Awarded to established investigators working on a specific cancer research project.

Clinical Research Career Development Awards (CRCDA)

\$148,500 over a 3-year period – Awarded to promising oncologists to conduct clinical research projects early in their career and to obtain additional training to become leaders in the field.

Research Career Development Awards (RCDAs)

\$148,500 over a 3-year period – Awarded to promising investigators who have recently established their own laboratories and are on their way to becoming outstanding independent investigators.

Acceleration Grants

\$154,000 over a 2-year period – Awarded to investigators proposing highly-innovative approaches that promise to pioneer new ways of thinking about cancer biology and therapeutics.

ICRF Special Initiatives

The Brause Family Initiative for Quality of Life Grants

\$275,000 over a 3-year period – Awarded to support established Israeli investigators studying cancer treatment related to pain, side effects and emotional problems experienced by cancer patients in order to maintain the best possible quality of life, with an emphasis on non-opioid solutions. (Currently, two grants are being supported.)

The Len and Susan Mark Initiative for Ovarian and Uterine/MMMT Cancers Grants

\$315,000 over a 3-year period – Awarded to support established Israeli investigators studying the biology, diagnosis, treatment or prevention of ovarian and/or uterine/MMMT cancers. (Currently, three grants are being supported.)

The Barbara S. Goodman Endowed Research Career Development Award (RCDA) for Pancreatic Cancer

\$148,500 over a 3-year period – Awarded to support a young Israeli scientist embarking on an independent research career with a particular focus on pancreatic cancer.

The Beverley Librach Abshez Initiative for Ovarian and Female Reproductive System Cancers Grants

\$315,000 over a 3-year period – Awarded to support established Israeli investigators studying the diagnosis and/or treatment of ovarian and female reproductive system cancers. (Currently, two grants are being supported.)

The Special Initiative in Pediatric Cancer Research Grant

\$264,000 over a 3-year period – Awarded to support established Israeli investigators with demonstrated expertise in pediatric cancer research or an interest in entering the field.

The ICRF – Samuel Waxman Cancer Research Foundation (SWCRF) Aging and Cancer Grants

\$200,000 over a 2-year period

To support collaborative research projects between established Israeli and US-based investigators studying the prevention and treatment of aging-associated cancers. (Two grants have been awarded.)



81

Cancer research projects funded in 2023-2024

- 4 Acceleration Grants
- 7 Research Professorship Grants
- 15 Research Career Development Awards
- 38 Project Grants
- 3 Postdoctoral Fellowships
- 5 Collaborative Research Partnership Grants
- 8 Special Funding Initiatives
- 1 Clinical Research Career Development Award

Among the areas of cancer research being supported are studies in: blood, bone, brain, breast, colorectal, endocrine, head and neck, gastric, kidney, lung, oral, ovarian, pancreatic, pediatric, prostate, and skin cancers; drug development and chemoresistance; cancer stem cells; imaging and early detection; DNA repair; tumor metastasis; aging and cancer; inflammation and cancer; obesity and cancer; cannabinoids for cancer treatment and pain management; biomarkers for diagnosis, prognosis, and targeted therapy; immunology and immunotherapy; cardio-oncology; cancer and bacteria and the tumor microenvironment; and quality of life.

Selecting the Best Science

The mission of ICRF is to fund the very best cancer research conducted by scientists at leading institutions throughout Israel. The scientific peer review process is central to this mission. It's my honor to serve as the Chair of the ICRF International Scientific Council (ISC), a group of scientists and physician-scientists who provide scientific leadership to ICRF and oversee the peer review process to ensure that it is both transparent and fair.

The first step in peer review is detailed evaluation of each proposal by one of the three Scientific Review Panels (SRPs). SRP members are leading U.S. and Canadian scientists from all fields of cancer research, who generously agree to commit their time to provide rigorous and detailed written reviews of six to eight proposals each year. SRPs meet in March to critically discuss proposals and assign priority scores based on the significance and potential impact of the research for cancer, the qualifications of the applicant, the available infrastructure and intellectual environment, and the budget. Scores from all panels are merged into a priority list that identifies top candidates for funding. The next step is that the ISC evaluates the priority list and makes formal recommendations to the ICRF International Board of Trustees. Finally, the Board allocates funds. This multi-step process – SRP to ISC to Board – ensures that the review is transparent and objective, and that ICRF supports research of the highest quality and greatest potential impact.

I first became involved with ICRF in 2007, when I was invited to join a Scientific Review Panel. During my career I've reviewed many papers and grant applications from top U.S. and international investigators, but among the small pile of ICRF applications I was assigned, a few went far beyond anything I had seen in other contexts.

The very best applications to ICRF are characterized by their creativity, their focus on highly significant problems, and the relatively modest budgets they require to accomplish their goals. ICRF support makes an enormous difference to the Israeli scientists we fund. It's an honor to be part of the process that identifies the top research and brings it forward for funding, and it's a pleasure to work with the many dedicated folks at ICRF who support this effort.



Nancy Maizels, PhD,

Chair, ICRF International Scientific Council; Chair, ICRF Scientific Review Panel SEA; Professor of Immunology and Biochemistry Emerita, University of Washington School of Medicine, Seattle

ICRF Peer Review Process

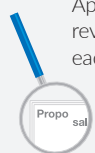
ICRF's peer review process is highly regarded throughout the scientific community for being thorough, transparent, and fair. It is based on the application process used by the National Institutes of Health (NIH).

1 Israeli Scientists Submit Grant Applications



Israeli scientists, based in Israel, submit comprehensive descriptions of their proposed cancer-related research in December.

2 Scientific Review Panels (SRPs) Evaluate Each Proposal



Applications are assigned to one of three scientific review panels. Two reviewers from the assigned panel each provide a detailed evaluation based on:

- Potential to advance diagnosis, treatment, or prevention of cancer
- Innovation, scientific merit, and originality
- Qualifications of the applicant
- Research facilities and intellectual environment
- Budget

3 SRPs Make Recommendations



The SRPs meet annually in the Spring. The U.S. and Canadian experts on the SRPs discuss the applications and assign an overall rating to each one. Funding is based on these ratings.

4 International Scientific Council (ISC) Establishes Funding Priority



ICRF scientific policy is overseen by the ISC, composed of eminent U.S., Canadian, and Israeli cancer researchers. The ISC evaluates the applications based on scores from the SRPs and makes recommendations for funding to the ICRF International Board of Trustees.

5 Board Allocates Resources



ICRF's International Board of Trustees allocates available resources; funding for each grant is continued only if the required progress reports are satisfactory.

Scientist Spotlights



Irit Ben-Aharon, PhD

Rambam Health Care Campus
ICRF Project Grant

“I think that the ICRF was one of the first organizations to recognize the impact or potential of my research. Today we are talking about living beyond cancer, and I think that my research is actually about the day after, about morbidity that may be related to the treatments and to survival after treatment, or after cancer. The ICRF was one of the first to recognize the impact of studying what is beyond cancer and not only cancer research. I think that this is one of the great things about the ICRF because it's much wider in scope of the awards.”



Tal Burstyn-Cohen, PhD

Hebrew University of Jerusalem
ICRF Joseph Safra Memorial Grant for
Glioblastoma Research

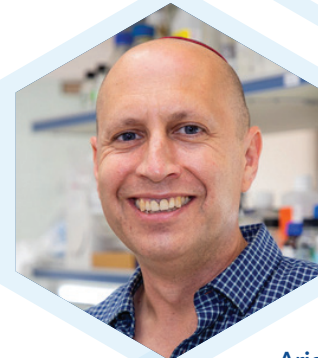
“Funding cancer research in Israel is extremely important. Israel has great minds, great ideas, and excellent science. It's called the startup nation, and funding cancer research in Israel allows these ideas to transform into products that benefit everyone. Funding cancer research in Israel also advances our understanding of cancer and supports higher education and training for young scientists.”



Jacob Hanna, MD, PhD

Weizmann Institute of Science
ICRF Nikoh Foundation Research Professorship Grant

“ICRF funding has been very important for us because these projects are really trying to make a stem cell in a dish become an embryo-like entity without uterus, sperm, or egg. These are projects that are very tough and take a lot of time, and the fact that ICRF has programs that support research over five or seven years is critical because it takes time to get these achievements done, and that is a very unique and important thing that ICRF does.”



Ariel Munitz, PhD

Tel Aviv University
ICRF Redhill Foundation Project Grant

“Israel is a pioneer in multiple aspects, especially in terms of cell and gene therapy, and especially in cancer. Funding research in Israel in terms of the amount of research and the amount of knowledge you get per dollar in which you invest is, I think, one of the highest in the world, and this is, I think, a main incentive for someone to give and donate to the ICRF and through the ICRF to cancer research in Israel.”

Stories of Hope



Frances Ginsburg, MD

Breast Cancer and Endometrial
Cancer Survivor

“The more I have learned [about ICRF], the more I realize that the impact is stupendous. I’ve spoken to a couple of the researchers. I have learned about their work, and it’s so important that this kind of work gets funded. Funding for especially young scientists can be so erratic that we fill in a gap—many gaps—that otherwise would never be funded. I think we’re delivering a huge impact on the investment. It’s why I support this particular organization.”



Jen Goldman

Breast Cancer Survivor

“Funding for cancer research is so important because, as the ICRF slogan says, the answer to cancer is research. If we don’t provide the brilliant minds who are thinking about how to literally cure cancer with the funds that they need, there won’t be any progress. I know, as someone who wore a cold cap, that was a big step in cancer research. Every year, new things come out, and the ICRF is at the forefront of so much of it.”



Noel Hara

Hodgkin’s Lymphoma Survivor

“I support ICRF because of the cutting-edge research that takes place in Israel for cancer, for science, and for everything; it’s just a culture of innovation. It’s a place where we see things come out that nowhere else in the world are they having these types of discoveries.”



Sam Herzfeld

Cancer Survivor

“Funding for cancer research is critically important because the more scientists we can fund, the better the chance we have of ending the suffering caused by this disease, and I want to be a part of this effort in any and every way that I can. ICRF is an amazing vehicle to fund the groundbreaking research that’s happening in Israel. It’s no secret that Israel is a hotbed of innovation, and we’ve already seen some amazing successes.”

Chapter Highlights

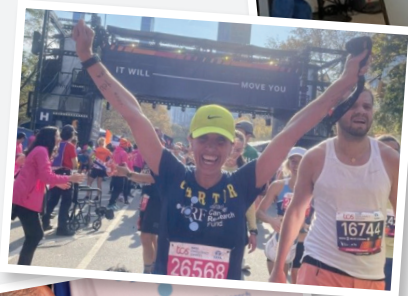
Connecticut



Toronto



New York



Israel



Chapter Highlights



Chicago



New Research Breakthroughs

Jacob Hanna, MD, PhD | Weizmann Institute of Science

ICRF Nikoh Foundation Research Professorship Grant
‘Complete’ Models of Human Embryos Created from Stem Cells in Lab

[The Guardian](#) | [Ian Sample](#) | [September 2023](#)

Human Embryo Model one of the Best Inventions of 2023

[Time](#) | [Katie Macbride](#) | [October 2023](#)

Yosef Yarden, PhD | Weizmann Institute of Science

Project Grant

Scientists Say They Can Short-Circuit Lung Cancer Gene

[Israel21c](#) | [John Jeffay](#) | [August 2023](#)

Shoshana Greenberger, MD, PhD | Chaim Sheba Medical Center

Project Grant

Discovery on How Skin Cancer Spreads Raises Hopes of Vaccine

[No Camels](#) | [Enne Kim](#) | [June 2023](#)

Angel Porgador, PhD | Ben-Gurion University of the Negev

Acceleration Grant

Ben-Gurion University Researchers Develop Bio-sensing Technology to Predict Cancer Treatment Response

[The Economic Times](#) | [Online Desk](#) | [June 2023](#)

Hava Gil-Henn, PhD | Bar-Ilan University

ICRF Redhill Foundation Project Grant

New Pyk2-Derived Peptide Inhibits Breast Cancer Metastasis

[News Medical Life Sciences](#) | [Emily Henderson, BSc](#) | [January 2023](#)



Financials

Total Funding by Institution*

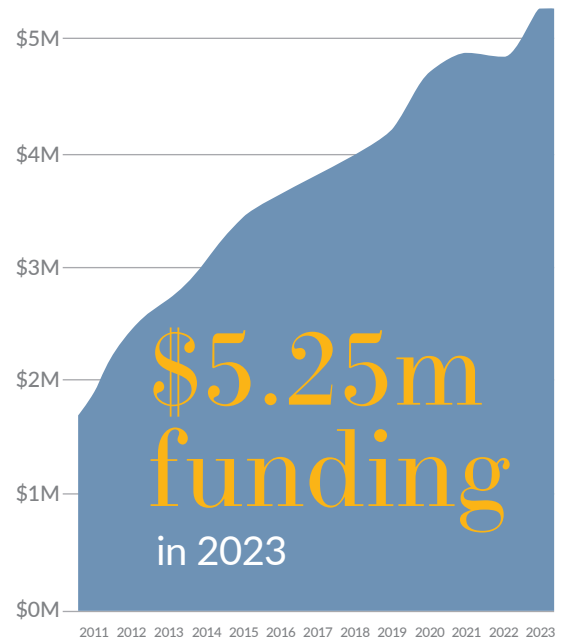
Institution Name	Total
Ariel University	\$205,000
Assaf-Harofeh Medical Center	\$150,000
Bar-Ilan University	\$4,575,667
Ben-Gurion University	\$2,665,500
Carmel Hospital	\$319,000
Chaim Sheba Medical Center	\$3,934,167
Hadassah University Hospital	\$3,064,863
Hebrew University	\$18,355,133
Kaplan Hospital	\$85,500
MIGAL - Galilee Technology Center	\$370,000
National Institute of Oceanography	\$105,000
Rabin Medical Center, Beilinson and Golda Campuses	\$528,500
Rambam Medical Center	\$1,850,000
Schneider Children's Medical Center	\$300,000
Shaare Zedek Medical Center	\$882,000
Technion, Israel Institute of Technology	\$10,048,500
Tel-Aviv Sourasky Medical Center	\$663,333
Tel-Aviv University	\$11,483,000
University of Haifa	\$105,000
Volcani Institute	\$30,000
Weizmann Institute of Science	\$13,800,900
Western Galilee Medical Center	\$105,000

*Period from 1990-2023

Total funding from 1990 – 2023: Over \$73 million;
Total funding from inception through 2023:
Over \$92 million

Please be advised that amounts reflect no bias and have not been allocated per institution, but impartially to the scientists who scored the highest in ICRF's fully-objective, grant application peer-review process.

Annual Research Funding



Sources of Income

33% Foundations and Corporate Sponsorships

29% Special Events

22% Individuals

10% Investment Income

6% Donated Services

A Legacy of Generosity

Planned Giving

With a planned gift to the Israel Cancer Research Fund, you can leave a philanthropic legacy that will help those touched by cancer — now and for years to come. Whether you would like to put your donation to work today or in the future, there are a variety of opportunities

for making a legacy commitment. Visit www.icrfonline.org/planned-giving to learn how you can create a lasting impact on the future of cancer research.

ICRF Donor Recognition Park in Tel Aviv

The ICRF Donor Recognition Park in Tel Aviv, a 4.5-acre oasis of greenery and tranquility, maintained by the Tel Aviv municipality, exists as a living monument to the memory of loved ones throughout the world lost to cancer. The park also provides a permanent place of recognition for ICRF's generous benefactors.

The Donor Wall, located at the heart of the park, holds the names of ICRF's generous benefactors who not only share the dream of making cancer history — but who also take proactive steps to make it happen.

Visit www.icrfonline.org/icrf-park to learn more.



"My wife and I have lost dear friends to cancer. We are so impressed with the breakthrough research of ICRF scientists that we've decided to leave a legacy so future generations will not experience such loss. We recently updated our will, and I learned that the easiest way was to add ICRF as a beneficiary to my IRA account. All it took was an email to my stockbroker! It feels good knowing that we will be helping humankind even when we are no longer here."

[Jerry Silber](#), Chair, ICRF Connecticut Chapter

For more information about planned giving or ICRF Park naming opportunities, please call or email:

Alan Herman,
National Director of Advancement
at 347-218-5946
or alan.herman@icrfonline.org.

Israel Cancer Research Fund

Board of Trustees 2023

President

David Abramson

Chair

Bryna Goldberg

Vice Presidents

Arnold M. Baskies, MD

Nancy Maizels, PhD

Treasurer

Richard Edelheit

Secretary

Cynthia Perl

Executive Committee

Members

Jordanna Feifer

Bonnie E. Fish

Leslie Freedman, PhD

Lisa Oved

Charles Serlin

Trustees

Robert Bard

Bruce Barron

Charles Ben Dayan

Alan Berk

Jeffrey Bernstein

Jeffrey Bly

Michelle Chrein

Marsha Deakter

Rob Densen

Vera Finkelstein

Paul T. Fox

Tamir Gilat

Brad Goldhar

Kenneth E. Goodman

Gary I. Grad, MD

Robert Greene

Maryanne Greenfield

Samuel Herzfeld

Mark A. Israel, MD

Barbara Kasell

Susan Matteson King

Michelle Makori

David Malkin, MD

Len Mark

Patrick Mundt

Lisa Oved

Tom Peled

Joel Pelofsky

Gerald Soff, MD

Julia Weksler

Sidney J. Winawer, MD*

Presidents Emeritus

Rob Densen

Harriet Elisofon

Brad Goldhar

Yashar Hirshaut, MD

Harvey Kaylie*

Daniel G. Miller, MD*

Theodore T. Miller, MD

Chairs Emeritus

S. Donald Friedman*

Kenneth E. Goodman

Yashar Hirshaut, MD

Michael Rosenfelt

Leah Susskind*

Eve Wald*

Honorary Board Members

Evelyn Bienenfeld

Benjamin Brafman

Lynda Brafman

Louis Brause*

Harriet Elisofon

Maralyn Friedman

S. Donald Friedman*

Yashar Hirshaut, MD

Faith G. Miller

Steven T. Rosen, MD

Michael Rosenfelt

Judith Sherman

Michel Steinberger

Eve Wald*

National Executive Director

Beryl P. Chernov

Chapter Information

International Executive and New York Regional Offices

52 Vanderbilt Avenue, Suite 1410

New York, NY 10017

212-969-9800

info@icrfonline.org

Chicago

1 Northfield Plaza, Suite 235

Northfield, IL 60093

347-503-1544

chicagoteam@icrfonline.org

Connecticut Area

7 Lumanor Drive

Stamford, CT 06903

347-503-1636

ct@icrfonline.org

Los Angeles

info@icrfonline.org

Montreal

1310 Greene Avenue, Suite 710

Westmount, Quebec, H3Z 2B2

514-481-2723

info@icrfmontreal.org

www.icrfmontreal.org

Toronto

1600 Steeles Avenue West, Suite 227

Concord, Ontario, L4K 4M2

416-440-7780

research@icrf.ca

www.icrf.ca

Israel

26A Habarzel Street

Tel Aviv 697 1037

+972-33806090

contact@icrf.org.il

www.icrf.org.il

* Deceased • Charter Board Member

Donate Online:

www.icrfonline.org/support

Donate Via Mail:

Israel Cancer Research Fund
P.O. Box 36
Hartsdale, NY 10530

Contact Us:

212-969-9800
info@icrfonline.org

Visit Our Website:

www.icrfonline.org

Follow Us:

@ICRFONLINE



Other Ways to Give:

Double the Donation

Double the impact of your donation with a matching gift from your employer. Many employers match employee donations to ICRF and it only takes a few seconds to check if yours is one of them by visiting www.doublethedonation.com/icrf

Personal Fundraising

Do a mitzvah! Commemorate a birthday, anniversary, or other milestone for yourself or a loved one and make an impact in the fight against cancer by creating your own fundraising page on our website. www.icrfonline.org/donate

Tax ID (EIN):

51-0181215





Israel
**Cancer
Research
Fund**